

EXTRAICT DV PRIVILEGE.

L est permis à Adrian le Roy, & Robert Balard, imprimer ou faire imprimer, & exposer en vente tous livres de Musique (tant instrumentale que vocale) qui seront par eux Imprimez. Et ce pour le temps de neuf ans, à compter du iour qu'ilz seront paracheuez d'imprimer, iusques à neuf ans finiz & accompliz. Et sont faites defences à tous imprimeurs, libraires, & autres, d'iceulx imprimer, ne exposer en vente, Sur peine de confiscation desditz livres: Ensemble d'amende arbitraire, & de tous deppens, dommages & interestz. comme plus à plain est cōtenu es lettres de Priuilege, Sur ce, Données à Fontainebleau, le quatorziesme iour d'Aoust. L'an de grace Mil cinq cens cinquante & vn. Et de nostre regne le cinqiesme.

Signées Par le Roy en son conseil,

Robillart.



T I E R S L I V R E D E T A B V.

L A T V R E D E G V I T E R R E , C O N T E -

nant plusieurs Préludes, Chançons, Basse-dances, Tour-

dions, Pauanes, Gaillardes, Almandes, Bransles, tant

doubles que simples. Le tout composé par

A D R I A N L E R O Y .



A P A R I S .

De l'imprimerie, d'Adrian le Roy, & Robert Ballard, Imprimeurs du Roy, rue
saint Iean de Beauuais, à l'enseigne sainte Geneuieue.

1 5 5 2 .

Auec priuilege du Roy, pour neuf ans.

PRELUDE.



Relude.



PRELUDE.



Vire prelude.

CHANSON.

Naduocat.

CHANSON.

FIN.

CHANSON.

A la tenor.

FIN.

CHANSON.

Jean de Lagny

CHANSON.

The first page of the musical score consists of a vocal line and three lute tablature lines. The tablature lines are written on six-line staves with letters (a, b, c, d, e, f) indicating fret positions. The vocal line is written on a five-line staff with a treble clef and a common time signature. The lyrics "Our vn plaisir que si peu dure." are written below the vocal line, starting with a large, ornate initial letter 'O'. The music is divided into measures by vertical bar lines.

CHANSON.

The second page of the musical score continues the vocal line and lute tablature from the first page. It features a vocal line and three lute tablature lines. The tablature lines are written on six-line staves with letters (a, b, c, d, e, f) indicating fret positions. The vocal line is written on a five-line staff with a treble clef and a common time signature. The music is divided into measures by vertical bar lines.

BASSE-DANCE.

L' estoit vne fillette en basse-dance.
 This page contains five systems of musical notation for a piece titled "BASSE-DANCE". Each system consists of two staves. The first system begins with a large, ornate initial letter 'L'. The notation includes rhythmic flags above the notes and various musical symbols such as clefs and accidentals.

DEMIE BASSE-DANCE.

This page contains five systems of musical notation for a piece titled "DEMIE BASSE-DANCE". Each system consists of two staves. The first system begins with a large, ornate initial letter 'D'. The notation includes rhythmic flags above the notes and various musical symbols such as clefs and accidentals.

TOURDION.

Musical score for the first page of 'TOURDION'. It consists of six staves. The first two staves are a pair of treble clefs. The third staff begins with a large, ornate initial 'D' and contains the instruction 'ourdion.' below it. The fourth and fifth staves are another pair of treble clefs. The sixth staff is a single treble clef. The music is written in a historical style with various note values and rests.

TOURDION.

Musical score for the second page of 'TOURDION'. It consists of six staves. The first two staves are a pair of treble clefs, with a large, ornate initial 'D' at the beginning and the instruction 'Lus dimincé.' below it. The third and fourth staves are another pair of treble clefs. The fifth staff begins with a large, ornate initial 'D' and contains the instruction 'Avanc l'oy du mal tant est.' below it. The sixth staff is a single treble clef. The music continues from the first page.

PAVANE.

Musical score for the first page of a PAVANE. The score consists of six staves of music. The notation includes various notes, rests, and dynamic markings such as *p* (piano) and *f* (forte). There are also articulation marks like slurs and accents. A specific instruction "Plus diminuee" is written in the fourth staff. The piece concludes with a double bar line and repeat dots.

PAVANE.

Musical score for the second page of a PAVANE. The score consists of six staves of music. The notation includes various notes, rests, and dynamic markings such as *p* (piano) and *f* (forte). There are also articulation marks like slurs and accents. The piece concludes with a double bar line and the word "FIN." written in the sixth staff.

GAILLARDE.



Gaillarde de la precedente pavane.

Plus diminuee.

GAILLARDE.

FIN.

PAVANE.



B *Auane de la guerre.*

PAVANE.

GAILLARDE.

Gaillarde de la precedente pavane.

GAILLARDE.

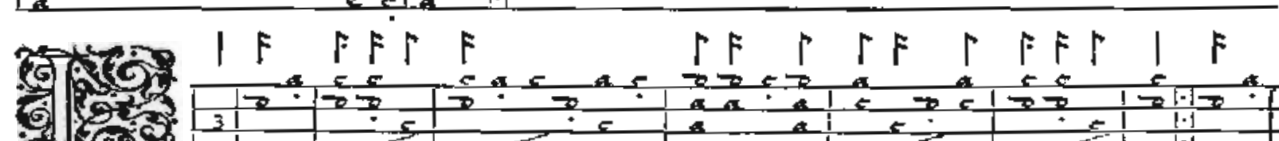
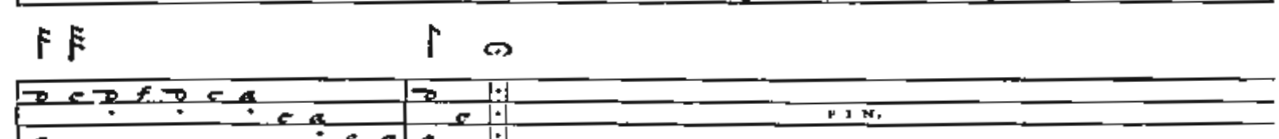
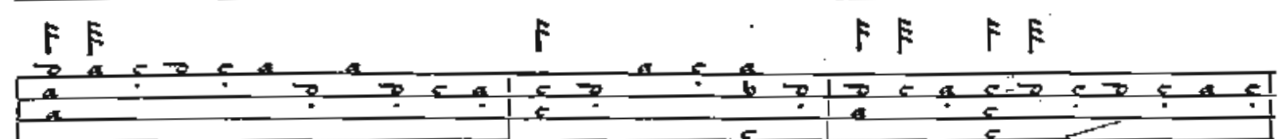
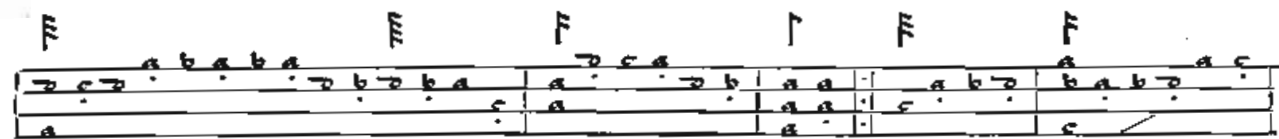
GAILLARDE.

The first page of the musical score consists of two systems of staves. The first system has two staves with rhythmic markings above the notes. The second system also has two staves, with the word "FIN." written between them. The third system begins with a large, ornate decorative initial on the left, followed by two staves of music. Below the first staff of this system is the text "A toulorane gaillarde." The fourth system has two staves with rhythmic markings above the notes. The fifth system has two staves with rhythmic markings above the notes.

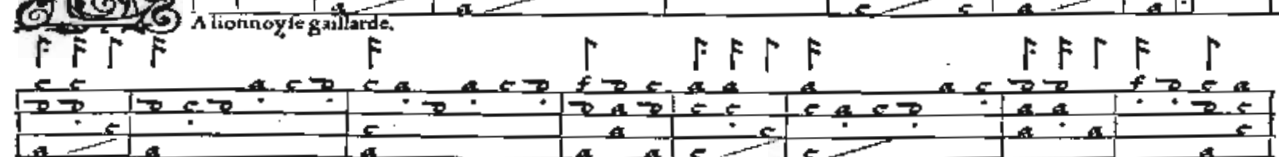
GAILLARDE.

The second page of the musical score consists of two systems of staves. The first system has two staves with rhythmic markings above the notes, and the text "Plus diminuée." is written between the staves. The second system has two staves with rhythmic markings above the notes. The third system has two staves with rhythmic markings above the notes. The fourth system has two staves with rhythmic markings above the notes. The fifth system has two staves with rhythmic markings above the notes.

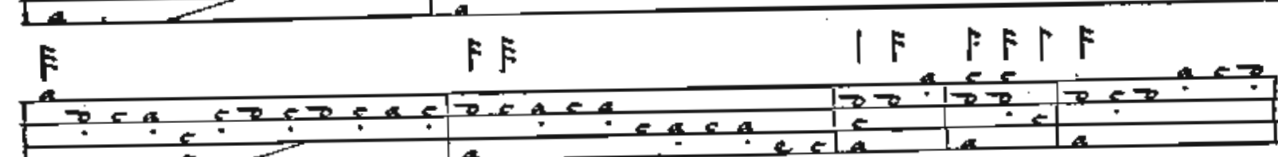
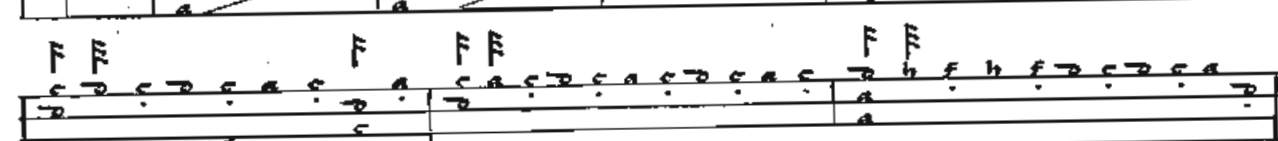
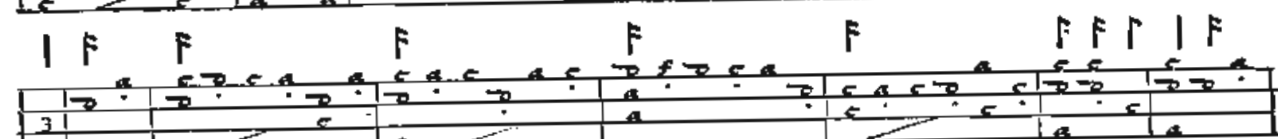
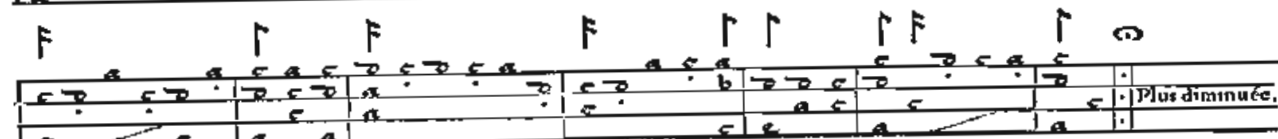
GAILLARDE.



A lionnoye gaillarde.



GAILLARDE.



D

GAILLARDE.

3
Aillarde.

GAILLARDE.

Plus diminuée.

FIN.

GAILLARDE.

3

Allarde.

Musical score for Gaillarde, page 14. The score begins with a large, ornate initial 'G' in the first staff. The music is written on six staves. The first staff contains a treble clef, a key signature of one flat, and a 3/4 time signature. The piece is marked 'Allarde.' and includes various rhythmic values and dynamics such as 'f' (forte).

GAILLARDE.

3

A Romanesque Gaillarde.

Plus diminuée.

Musical score for Gaillarde, page 15. The score begins with a large, ornate initial 'G' in the first staff. The music is written on six staves. The first staff contains a treble clef, a key signature of one flat, and a 3/4 time signature. The piece is marked 'A Romanesque Gaillarde.' and includes a section marked 'Plus diminuée.' (more diminished).

ALMANDE.

FIN.

Almande le Pied de cheval.

ALMANDE.

FIN.

Almande tournée.

ALMANDE.

Musical score for 'ALMANDE' consisting of six systems of two staves each. The notation includes various rhythmic values and dynamic markings. The first system includes the instruction 'Plus diminue.' and the final system ends with 'FIN.' and a double bar line.

BRANSLE.

Musical score for 'BRANSLE' consisting of six systems of two staves each. The first system begins with a large, ornate initial letter 'B' and includes the instruction 'Raille simple.' The notation includes various rhythmic values and dynamic markings. The final system ends with a double bar line and the letter 'E' below it.

BRANSLÉ.

Musical score for 'BRANSLÉ' consisting of five staves. The notation includes various rhythmic values and dynamic markings. A 'Plus diminué.' marking is present on the second staff. The piece concludes with a 'FIN.' marking on the fifth staff.

BRANSLÉ GAY.

Musical score for 'BRANSLÉ GAY' consisting of five staves. The first staff begins with a large decorative initial 'B' and a '3' below it. The notation includes various rhythmic values and dynamic markings. A 'Ranlie gay.' marking is present on the second staff, and a 'Plus diminué.' marking is present on the third staff. The piece concludes with a 'FIN.' marking on the fifth staff.

BRANSLE GAY.



Ranfle gay La canture que se porte.

Plus de maine.

BRANSLE GAY.

BRANSE GAY.

Branse gay le ne feray jamais bergere.

Plus diminue.

FIN.

Detailed description: This page contains a musical score for a piece titled 'BRANSE GAY'. It begins with a large, ornate initial 'B' followed by the title and a line of rhythmic notation. Below this is a vocal line with the lyrics 'Branse gay le ne feray jamais bergere.' and a corresponding melodic line. The score continues with several staves of instrumental music, including a section marked 'Plus diminue.' and ending with a 'FIN.' marking.

BRANSE.

Branse de Champagne.

FIN.

Detailed description: This page contains a musical score for a piece titled 'BRANSE'. It starts with a large, ornate initial 'B' followed by the title 'Branse de Champagne.' and a line of rhythmic notation. The score consists of several staves of instrumental music, ending with a 'FIN.' marking.

BRANSLÉ.

Branfle de Champagne.

FIN.

BRANSLÉ.

Branfle de Champagne.

FIN.

H A V L B A R O Y S.

Musical score for Haulbaroys, consisting of two systems of two staves each. The first system concludes with the word "FIN.". The second system begins with a large, ornate initial letter "B" and ends with the instruction "Ranle Haulbaroys."

P I M O N T O Y S E.

Musical score for Pimontoyse, consisting of two systems of two staves each. The first system concludes with the word "FIN.". The second system begins with a large, ornate initial letter "P" and includes the instruction "Imontoyse." followed by "Plus diminuée."

BRANSLÉ.

Musical notation for the first system of the Bransle on page 32, consisting of three staves.

FIN.

Musical notation for the second system of the Bransle on page 32, starting with a large decorated initial 'B'.

Ranlle de Poitou.

BRANSLÉ.

Musical notation for the first system of the Bransle on page 33, consisting of three staves.

Plus diminué.

FIN.

Musical notation for the second system of the Bransle on page 33, starting with a large decorated initial 'B'.

Ranlle de Poitou.

BRANSLÉ.

C

B Ranlle de Poitou.

BRANSLÉ.

A Vtre branle de Poitou grand bonnet large.

Autre Branle de Poitou.

BRANSLÉ.



T A B L E.

Almande, Le pied de cheval.	Fol. 15	Gaillarde, La lionnoyse.	Fol. 18
Almande tournée.	16	Gaillarde.	14
Branfle simple.	17	Gaillarde.	24
Branfle gay.	18	Il estoit vne fillette basse-dance.	6
Branfle gay, La ceinture que ie porte.	19	La la la ie ne l'ose dire.	4
Branfle gay, Je ne seray iamais bergere.	19	Pour vn plaisir que si peu dure.	5
Branfles de Champagne. 4.	20	Pauane, l'ay du mal tant tant.	
Branfle de Poictou.	22	avec sa gaillarde.	8
Branfles de Poictou, en mode de Cornemuse. 4.	23	Pauane de la guerre, avec sa gaillarde.	10
Branfle hautbaroys.	21	Pimontoyse.	22
Deux preludes.	1	Tourdion.	7
Gaillarde, La toulouzané.	12	Vn Aduocat dit à sa femme.	3

F I N.

Q V A R T L I V R E D E T A B V -
L A T V R E D E G V I T E R R E , C O N T E N A N T

plusieurs Fantaisies, Pseaulmes, & Chansons: avec L'alouette, & la Guerre,
Composées par M. Gregoire Brayssing deaugusta.

T A B L E

Premiere fantaisie.	feuille 2.	Super flumina babylonis.	f. 13.
La seconde fantaisie.	f. 3.	Helas mon Dieu.	f. 14.
La troisieme fantaisie.	f. 4.	O passy sparsy.	f. 15.
La quatrieme fantaisie.	f. 5.	Voulant honneur.	f. 17.
La cinquieme fantaisie.	f. 6.	Je cherche autant amour.	f. 18.
La sixieme fantaisie.	f. 6.	Au temps heureux.	f. 19.
Verba mea.	f. 7.	Qui soubaitex.	f. 10.
In exitu Israël.	f. 7.	Vn meisoagier viellard recru d'ahan.	f. 21.
Cum inuocarem.	f. 11.	L'alouette.	f. 23.
Beati quorum.	f. 12.	La guerre.	f. 26.

A P A R I S.

De l'imprimerie, d'Adrian le Roy, & Robert Ballard, Imprimeurs du Roy, rue
saint Iean de Beauuais, à l'enseigne sainte Geneuieue.
26. Nouembre.

1553.

Avec priuilege du Roy, pour neuf ans.